



DONGGUAN CITY **KELIDA** WEIGHING APPARATUS CO., LTD



It is not merely precise for weighing apparatus

I. Company Profile



Dongguan City Kelida Weighing Apparatus Co., Ltd is a designer and manufacturer of precision weighing instruments. The company is located at Wangniudun Exit of Guang-shen expressway and it is only one-hour way from Guangzhou (Baiyun) International Air Port.



Kelida has ten-year history in weighing instrument. Our main products are weighbridge, portable axle scale, floor scale, platform scale, livestock scale and crane scale which are certified by CE(CONFORMITE EUROPEENNE), ISO9001:2008, OIML(International Organization of Legal Metrology). Our company enjoys uppermost reputation for reliable quality. The products cover domestic market and oversea market including Australia, Canada, Germany, Russia, Algeria, Burma, Cambodia, Congo, Ethiopia, Ghana, Indonesia, Kenya, Qatar, Saudi Arabia, Malaysia, Singapore, Tanzania and so on and the products are widely used in Agriculture, Construction, Forestry, Mining, Quarrying, Port and Recycling industries.

II. Certificates of Honors and Qualification



License of the Business Corporation



China Metrology Certification



Quality Management System Certificate



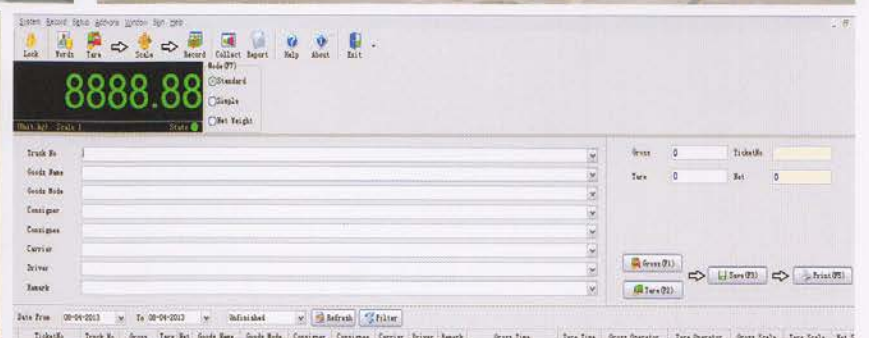
Certificate of Compliance

III. Product Introduction

1. Weighbridge/Truck Scale



A weighbridge (non-US) or Truck scale (US) is a large set of scales, usually mounted permanently on a concrete foundation that is used to weigh entire vehicles and their contents. By weighing the vehicle both empty and when loaded, the load carried by the vehicle can be calculated. It is widely used in commercial applications where products are sold by weight.



Technical parameter

- Accuracy class: OMIL III
- Weighing range: 10~150(t)
- Length: 5~42(m)
- Width: 3m, 3.2m, 3.5m, 4m
- Safe overload: 150% Max
- Input Voltage: 110V ± 10%~220V ± 10%, AC
- Input power frequency: 50Hz, 60Hz
- Power consumption: 12V, DC
- Serial port: RS232 or RS485 are available to for computer interface and scoreboard interface
- Printer interface: compatible parallel port
- Relative humidity: <95%
- Working temperature:
 - Indicator: -10℃~+45℃
 - Weighing platform and load cell: -30℃~+65℃

Civil Work Foundation for Weighbridge

1) Pit-mounted



2) Surface-mounted



Models and Standard-size

Model	Scs-10	Scs-20	Scs-30	Scs-40	Scs-50	Scs-60	Scs-80	Scs-100	Scs-120	Scs-150
Max capability(Tons)	10	20	30	40	50	60	80	100	120	150
Graduation (Kg)	5	5	5	5	10	10	10	20	20	20
Standard size (W × L)m	3 × 7	★	★	★	★					
	3 × 10				★					
	3 × 12				★	★				
	3 × 14				★	★	★			
	3 × 16					★	★	★	★	★
	3 × 18						★	★	★	★
	3 × 20							★	★	★
Remarks	the above items with ★ are standard size; Other size and capacity are also available.									

Advantages of Digital Weighbridge

- Strong transmission signal and no interference
- Reduced unbalanced loading due to temperature and creeping due to time
- Auto-diagnosis on failure, error code prompt function, very convenient in calibration and repair
- Digital signal transmission avoiding man-made interference and cheating
- PCB in the sensor has a lightning-protection design, prevents the lightning-protection of the whole system

2. Portable Weighbridge



Portable weighbridge is robust and durable, particularly when being constantly moved. The entire system runs from 12 Volts DC and can be run from a normal car or lorry battery or the re-chargeable internal battery. No mains power is needed giving maximum flexibility for using the weighbridge in remote locations.

3. Portable Axle Scale



- Capacity: ① wheel weight: $\leq 30T$ ② Axle weight: $\leq 60T$ ③ Total weight $\leq 1000T$ (≤ 18 axle)
- Dynamic comprehensive error(%F.S): 3 (5~10km/h)
- Static comprehensive error(%F.S): 0.3
- Product size: ① weighing pad's size: 870 × 470 × 25mm ② indicator's size: 410 × 305 × 190mm
- Defend grade: ① weighing pad: IP66 ② indicator: IP65
- Deposit: ① Temp. range: -30 ~ +80°C ② Relative Humidity: < 90%RH
- Vehicle axle weight is measured axle by axle, and the max number is unlimited
- Ultra high frequency ensures better anti-electromagnet ability
- Floating technology is adopted to remove zero drift
- Digitization menu, easy operation
- Micro printer is embedded in the wireless instrument, the print ticket contains date, time, truck no, ticket no, axle weight, joint axle weight, truck weight, overload and executive organization
- RS232 port is used to communicate with PC
- AC/DC, real time battery capacity indicating. The battery can be used for 40 hours on end. Automatic shut off

4. Floor Scale and Livestock Scale



Model	SCS-1	SCS-2	SCS-3	SCS-5
Capacity (T)	1	2	3	5
Graduation (KG)	0.25	0.5	1	2
Size(m)	1*1	1*1	1.2*1.2	1.2*1.5
	1.2*1.2	1.2*1.2	1.2*1.5	1.5*2
	1.2*1.5	1.2*1.5	1.5*1.5	2*2
		1.5*1.5	1.5*2	

5. Crane Scale



- Accuracy Class: OIML III
- Maximum Capacity (T): 1~50(Optional)
- Division (Kg): 1~10(Optional)
- Data Stability Cycle (Second): 5
- Material: steel alloy/stainless steel
- Power Supply: AC180—240V49HZ—51HZ
- Operating Temperature: -30° C~80° C
- Relative Temperature: ≤95%
- Display: LED backlight
- Transmission Distance: 100m
- Data Interface: RS232
- Protection Class: IP68

IV. Accessories



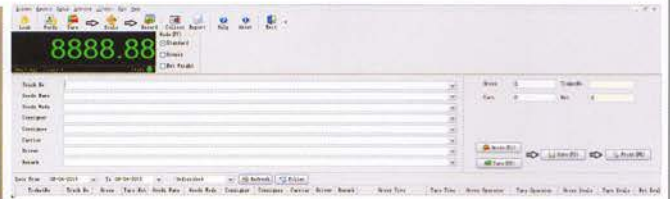
Indicator



Load Cell/Sensor



Scoreboard

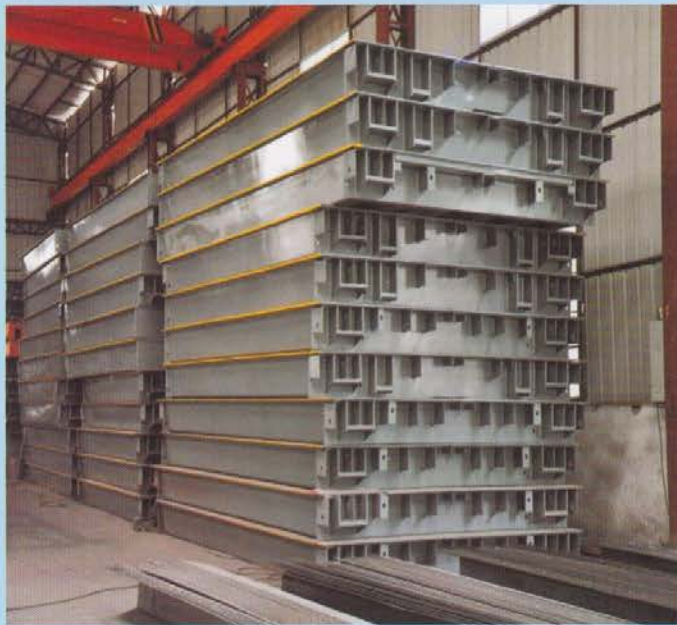


Weighing Software

V. Service and Technical Support



With the strong belief that after sales service is a vital part of each product, we provide quick and effective technical support, reliable service and a plentitude of spare parts always available in the warehouse. A team of experienced and dedicated people in our world-wide network will always be willing to assist you for any kind of technical request. If it is necessary, we are able to send our technicians to your place for installation.



With the development of the company and the rising demand of the market, automatic production line is brought in which includes welding machine, plasma cutting machine and pre-arch machine; and technical team are growing steadily. From order to custom clearance, installation and usual maintenance, there are professionals to charge in the whole process, which makes your business simpler. Here, we warmly welcome oversea customers to visit our company.

An aerial photograph of a coastal region, showing a mix of blue water and light-colored land. The land appears to be a mix of urban areas and open spaces, with some darker patches that could be trees or vegetation. The water is a deep blue, and the sky is a lighter blue. The overall scene is a wide, panoramic view of a coastal town and its surrounding waters.

Address: Tuoxin Sci-tech Industrial Park, Zhouwan
Administrative Zone, Wangniudun Town
Dongguan, Guangdong,

Tel: 0086-769-21663198

Fax: 0086-769-22270198

Website: www.kldwa.com